

# Mi·Light<sup>®</sup>

## 1-Channel Host Control Box

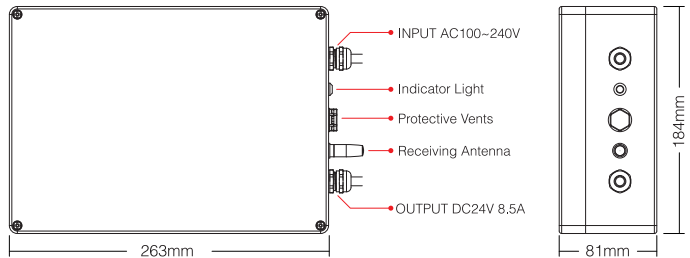
Model No.: SYS-PT1

### 1. Features

This control box adopt the widely used 2.4GHz wireless technology with the features of low power consumption, long signal transmitting and strong anti-interference, etc. 2.4GHz RF remote controller, DMX512 controller ( Need DMX 512 LED transmitter. Model No. FUTD01 ). Also with smart phone APP control (need WiFi ibox or WiFi remote). The controller has auto-transmitting and auto-synchronizing function. Only compatible with Mi-Light SYS series products, including wall washer light, underwater light and Garden Light, etc.

### 2. Parameters

Model No.: SYS-PT1  
 Input: AC 100~240V 50/60Hz  
 Output Voltage: DC24V  
 Output Current: Max 8.5A  
 Output Power: Max 200W  
 Controlling Distance: 30m  
 IP Rate: IP66  
 Product Weight: 2.55kg

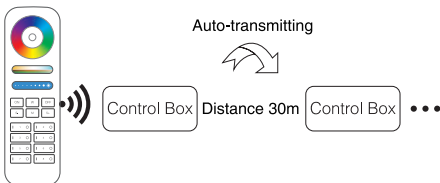


### 3. Dynamic Mode Sheet

Number	Dynamic Mode	Brightness&Speed	Saturation	
1	Seven color gradual change	Adjustable	Adjustable	
2	White light Gradual change		Unadjustable	
3	RGB gradual change		Adjustable	Adjustable
4	Seven color jump to change			
5	Jump to change randomly			
6	Red light gradual change+Flash 3times			
7	Green light gradual change+Flash 3times			
8	Blue light gradual change+Flash 3times			
9	White light gradual change+Flash 3times		Unadjustable	

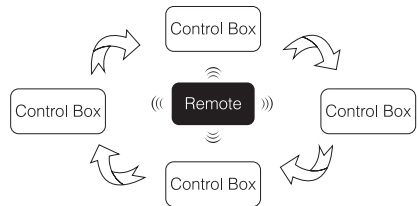
### 4. Auto-transmitting function

One strip controller can transmit the signals from the remote control to another controller within 30m, as long as there is a strip controller within 30m, the remote control distance can be limitless.

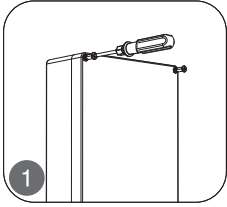


### 5. Auto-synchronization

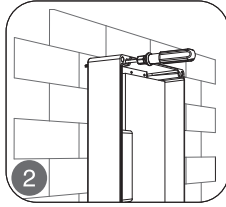
Different controllers can work synchronously when they are started at different times, controlled by the same remote, under same dynamic mode and with same speed, and within 30m distance.



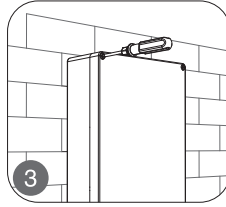
## 6. Installation Instruction



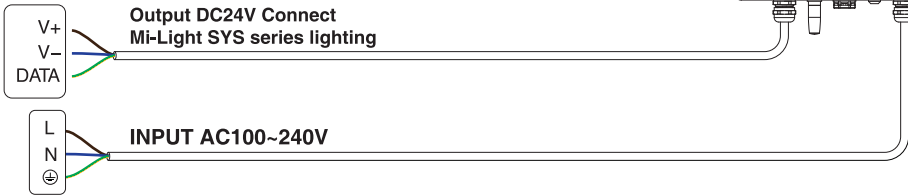
1  
Twist off the screws on the 4 corners; take apart the case cover.



2  
Fix the product in the specified position with the screws in the fitting



3  
Lid the case cover and lock the screws on the 4 corners



**Note:** When using "SYS-PT1 control box", you need to add "SYS-PT2 1-channel amplifier box" for below 3 situations.

1. Connecting over 50pcs lights.
2. Connected cable length over 300m.
3. Output power over 200W.

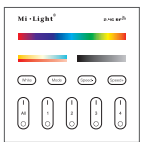
1. All connected lights to "SYS-PT1 Controller box" cannot be over 200W, otherwise, it will damage the controller box.
2. The wiring method, please see details for the SYS series instructions.

## 7. Link/Unlink

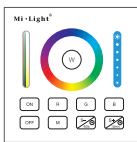
Compatible with these remote controls (Purchased separately)



Controller can be working after linking with remote; for more details, pls read the remote instruction.



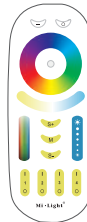
B4 / T4



B0



B8



FUT092



FUT088



FUT089

## 8. Attention

1. Please check whether the input voltage is in accordance with the control box working voltage, and please check the connection of both the cathode and anode.
2. Non-professional user cannot dismantle the control box directly, Otherwise the control box may be broken.
3. Please do not use controller around the mental area and high magnetic field, otherwise, it will badly affect the control distance.